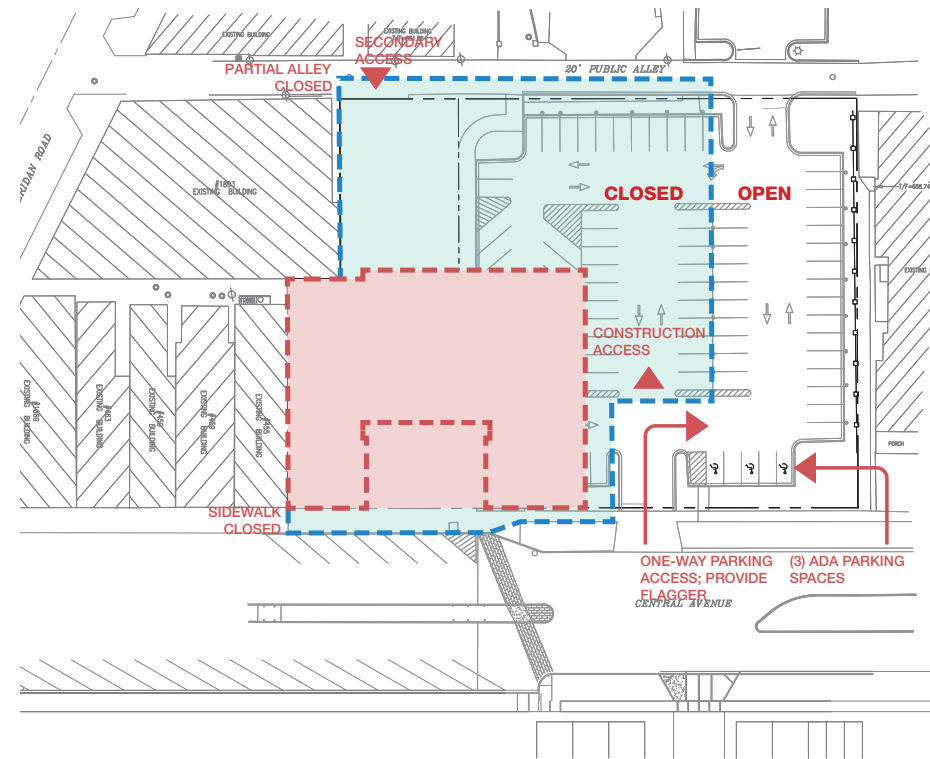
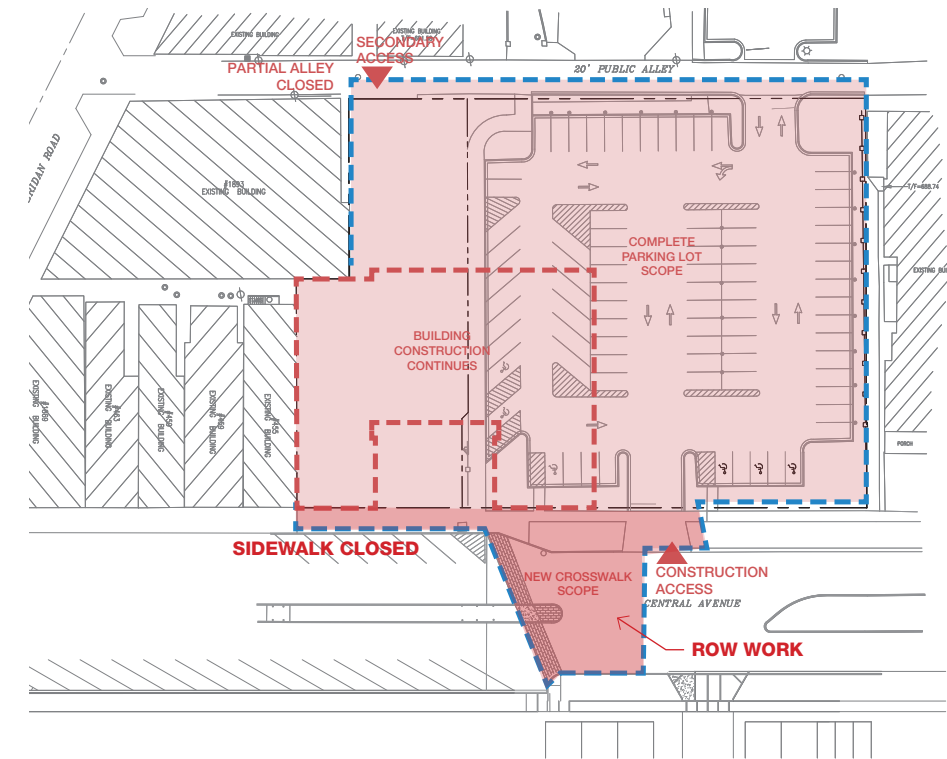


**PHASE 1 (1.5 MO.) - DEMO EXISTING THEATER AND FOUNDATION. EASTERN PART OF LOT OPEN TO PUBLIC; ALLEY TO BE CLOSED\*, BUT ONLY TEMPORARILY DURING BUILDING DEMO TO ENSURE SAFETY. OTHERWISE ALLEY WILL BE PARTLY CLOSED, BUT ACCESS TO PARKING AREAS AND FOR MOST SERVICES WILL BE MAINTAINED.**

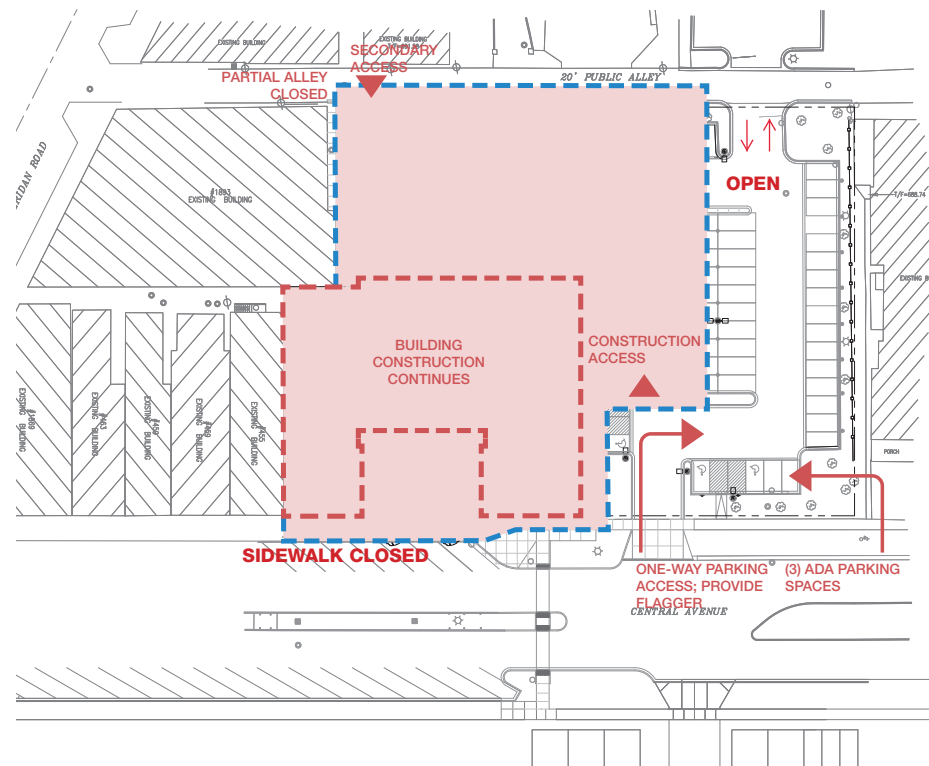


**PHASE 2 (1 MO.) - BUILDING CONSTRUCTION; WEST SIDE OF PARKING LOT CLOSED FOR STAGING; EASTERN PORTION OF PARKING LOT OPEN TO PUBLIC; ALLEY WILL BE PARTLY CLOSED\***

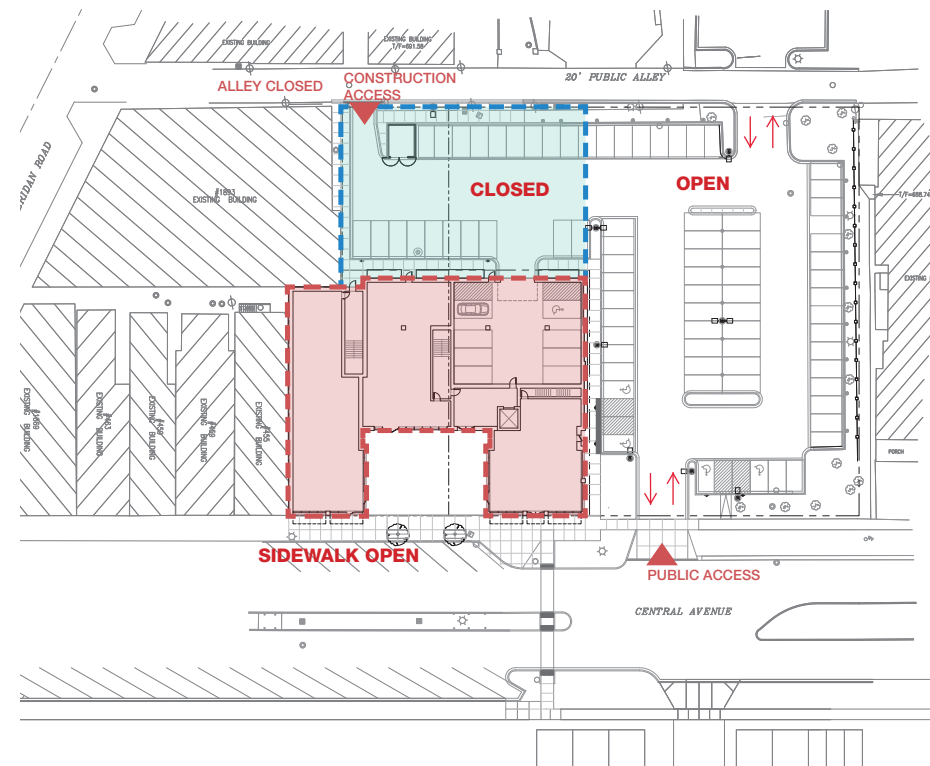


**PHASE 3 (2 MO.) -**

- CENTRAL AVE. STREET CLOSURES IN PHASE 3 MAY OCCUR, BUT ONLY TEMPORARILY DURING A 2-3 WEEK PERIOD AND ONLY FOR SEVERAL HOURS AT A TIME. THEATER SIDEWALK WILL BE CLOSED THROUGHOUT THE PROJECT. ALLEY WILL BE PARTLY CLOSED. \*
- THE DEVELOPER IS NOT RESPONSIBLE FOR SCHEDULE OR CLOSURES DO TO COMED WORK



**PHASE 4 (3.5 MO.) - PARKING AND BUILDING CONSTRUCTION CONTINUE; EASTERN PORTION OF THE LOT OPEN TO PUBLIC - PARKING LOT SCOPE TO BE COMPLETE BEFORE 11/15/18; ALLEY WILL BE PARTIALLY CLOSED\***



**PHASE 5 (8 MO.) - COMPLETE BUILDOUT; STAGING/ACCESS TO THE NORTH OF BUILDING; EXPANDED EASTERN PORTION OF PARKING LOT OPEN UNTIL ENTIRE LOT OPEN 8/1/19.**

**LEGEND / FOOTNOTES**



\* DEVELOPER TO MINIMIZE CLOSURES OF THE ALLEY AND TO COORDINATE WITH ABUTTING PROPERTY OWNERS AND THEIR TENANTS REGARDING THE TIMING AND DURATION OF CLOSURES (PARTIAL OR OTHERWISE) TO MINIMIZE DISTURBANCES TO ACCESS.

\*\* COMED SHUTOFF ON 3/19/18